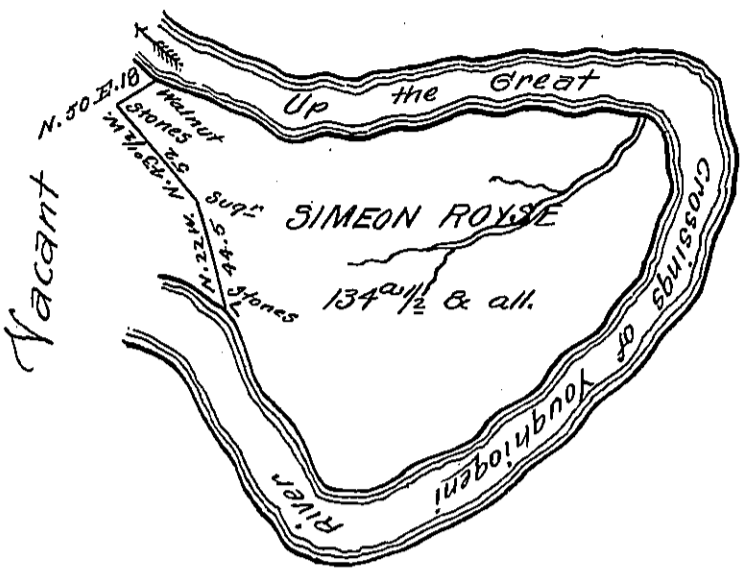


Courses & Distances up the River, Beg. at a Walnut

- S. 76° E. 69.8
 - N. 76 E. 71
 - N. 85 E. 83
 - S 35 E. 11.5
 - S. 9 E. 18.5
 - S. 21 W. 39.4
 - S. 36 W. 53.5
 - S. 45 W. 44.5
 - S. 65 W. 60
 - N. 40 W. 89.5
- to the Stones Marked. A
540.7



Situate on the West side of the Great Crossings of Youghiogini River
 in Fayette County Wharton Township & surveyed the 8th Day of March 1790
 In pursuance of a Warrant Dated the 23^d Day of February 1788.

P^r. Alexander M. Clean Deputy

To Daniel Brodhead, Esquire,
 Surveyor General.

IN TESTIMONY that the above is a copy of the original remaining on file in
 the Department of Internal Affairs of Pennsylvania, made
 conformably to an Act of Assembly approved the 16th day of
 February, 1833, I have hereunto set my Hand and caused
 the Seal of said Department to be affixed at Harrisburg,
 this twenty ninth day of June 1906

Isaac B. Brown
 Secretary of Internal Affairs.